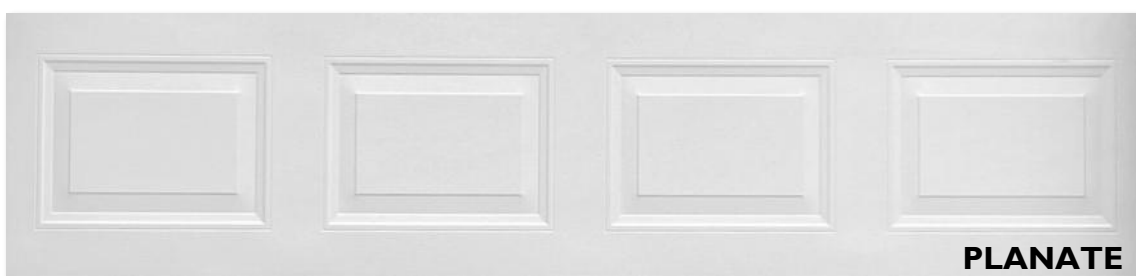




rounee
GARAGE DOORS
& SMART SYSTEMS

PANEL PROFILES

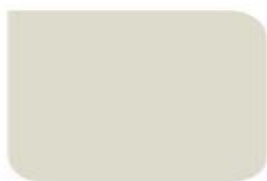


- PREMIUM TIMBER VENEERS ARE NOT AVAILABLE IN SLIMLINE PROFILE.
- ALL PANEL PROFILES SUPPLIED IN WOODGRAIN TEXTURE.
- SMOOTH TEXTURE AVAILABLE UPON REQUEST AT AN ADDITIONAL COST.
- SOME COMBINATIONS MAY REQUIRE LONGER WAIT PERIODS AND ADDITIONAL COSTS.

COLOUR OPTIONS

rounee
GARAGE DOORS
& SMART SYSTEMS

CONTEMPORARY COLOUR RANGE



SURFMIST®



EVENING HAZE®



SHALE GREY™



DUNE®



COVE™



WINDSPRAY®



GULLY™



MANGROVE™



WALLABY™



JASPER®



BASALT®



IRONSTONE®



TERRAIN®



MONUMENT®



SOUTHERLY®



DOVER WHITE®

CLASSIC COLOUR RANGE



CLASSIC CREAM™



PAPERBARK®



PALE EUCALYPT®



WOODLAND GREY®



DEEP OCEAN®



COTTAGE GREEN®

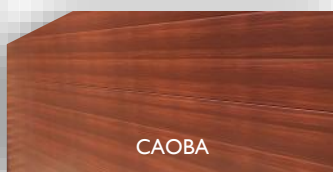


MANOR RED®

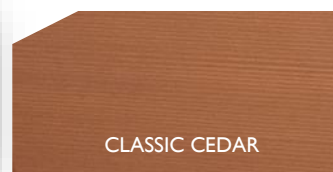


NIGHT SKY®

TIMBER SHADES



CAOBA



CLASSIC CEDAR

PREMIUM TIMBER VENEERS



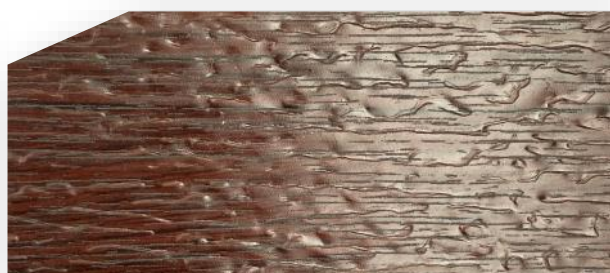
AMERICAN CEDAR



MAPLE BIRCH



WALNUT



RED GUM



EUCALYPTUS



DESERT ASH



BLACKWOOD



GOLDEN ASH

PREMIUM TIMBER VENEERS ARE NOT AVAILABLE IN SLIMLINE PROFILE

MOTORS & SMARTS



3- Year Warranty on Motor *



OPTIONAL WI-FI CONNECTIVITY

Download Smart Life App using the QR code.

Your smart phone can be connected to the Smart Motor for garage door control from anywhere*

**Requires internet connectivity on both the motor and smart phone*

OPTIONAL ACCESSORIES



PHOTOCELL PROTECTION SYSTEM
FOR SAFETY OF YOUR PRECIOUS ONES AND CARS!



**KEY
PAD**

WWW.ROUNEECOM.AU

For Further Product Information, please contact ROUNEE GARAGE DOORS & SMART SYSTEMS
at 03 9028 2034

or Email: info@rounee.com.au

* Motor warranty is subject to the door being serviced annually.

© 2025 LEDEMIT PTY LTD

SPECIFICATIONS AND OTHER INFORMATION IN THIS BROCHURE ARE CURRENT AT THE TIME OF PRINTING AND ARE SUBJECT TO AMENDMENT AT ANYTIME WITHOUT PRIOR NOTICE. COLOURS AND IMAGES IN THIS PUBLICATION ARE FOR GUIDANCE ONLY. ACTUAL COLOURS AND SHADES MAY VARY. WE RECOMMEND CHECKING COLOURS SHADES AGAINST ACTUAL SAMPLES. THERE MAY STILL BE SOME VARIATIONS DUE TO NATURE OF THE PROCESS. COLOURBOND IS A REGISTERED TRADEMARK OF BLUE SCOPE STEEL LIMITED.